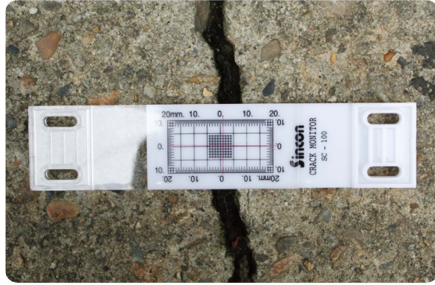
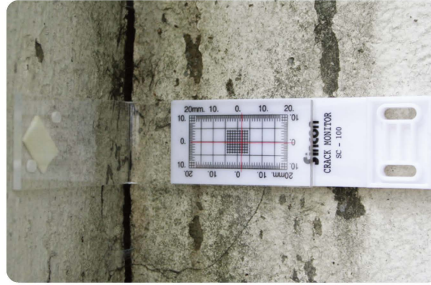


CRACK MONITOR SERIES

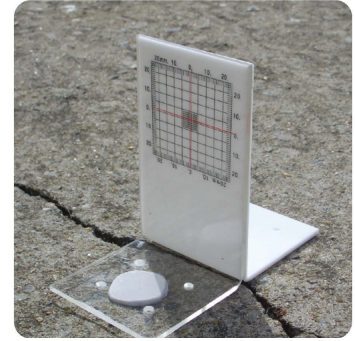
PC-020, PC-021, PC-022



PC-020



PC-021



PC-022

◦ INSTALLATION

- Crack monitors can be installed using either anchors, bolts, screws, 5-minute epoxy adhesive or even a combination of both.
- If anchors and screws are used, the crack monitors can be taken down and reused.
- When deciding whether to use anchors or epoxy you may want to take into.
- Consideration the type of surface (brick, masonry, concrete, the location) and the risks involved in drilling holes for anchors.

◦ FEATURES

- Inexpensive, simple yet accurate device for monitoring crack movement.
- Water proof design permits use in salt water.
- Silk screened crosshairs and grid.
- Consisted of two acrylic plates which move independently.
- Supplied with each gauge for periodic recording of movement.

Model	PC-020/PC-021	PC-022
Material	2 Acrylic Plates	Range
Discrimination	0.5mm	Range
Max. Movement Dimensions	20mm : longitudinal, 10mm : transverse Grid : 40x20mm, Plates : 32x102x3mm	25mm : longitudinal 25mm : transverse
Coeff. of thermal expansion	3.80x10 ⁻⁵ in/in/°F (6.84x10 ⁻⁵ mm/mm°C)	3.80x10 ⁻⁵ in/in/°F
Dimensions	Grid : 40 x 20mm Plates : 32 x 102 x 3mm	Grid : 50 x 50mm Plates : 64 x 115 x 3mm