

IML-RESI F-Series

Compact and flexible use

PROMAT
Your Solution To Testing Instrument

IML



IML-RESI F-Series

Mechanical drilling device for basic applications

Application areas

The IML-RESI F-Series can be used where reliable and relevant measurement results are required.

Fields of application:

- Tree care and inspection to maintain safe parks, roadways and forests
- Check the stability of utility poles
- Diagnose decay in wooden playground equipment as required by law
- Inspect structural wood in timbered houses, bridges and buildings on stilts for vulnerabilities and safety risks

Product features

- Cordless drill as drive unit
- Documentation of measurement results directly on-site
- Recording of the measurement curve on weather-proof wax paper strips
- Add-on innovative Bluetooth electronic unit enables rapid digital acquisition of measurement data
- Low weight ensures efficient operation even in difficult operational areas
- Splash-proof stainless steel housing with plexiglass cover to protect the measurement record
- Measurements below 45° using snap-on adapter

Bluetooth Electronic Unit

The Bluetooth Electronic Unit enables the digital acquisition of measurement data.

- Electronic storage of the measurement data on internal storage unit
- Entry of 40-digit ID-numbers and remarks
- USB and Bluetooth interface for connection to a PC or handheld device
- Wireless transmission of measurement record
- Simultaneous recording of drilling curve
- Displays the feed rate, remaining memory length, battery state, the drilling stage and the date and time

Specifications

Drilling depths:	150 mm to 500 mm
Energy source:	Lithium-Ion rechargeable Battery
Results:	Measurement record on wax paper strips, optional: Electronic measurement data storage
Versions:	Standard Version, Reinforced S- and SX-Version
Feed speed:	2 stages up to 150 cm/min
Sensibility:	2 adjustable stages for hard and soft wood



Your Solution To Testing Instrument

PROMAT (HK) Limited 寶時(香港)有限公司

901 New Trend Center, 704 Prince Edward Road East, SPK, Kln, HK

香港九龍新蒲崗太子道東704號新時代商業中心901室

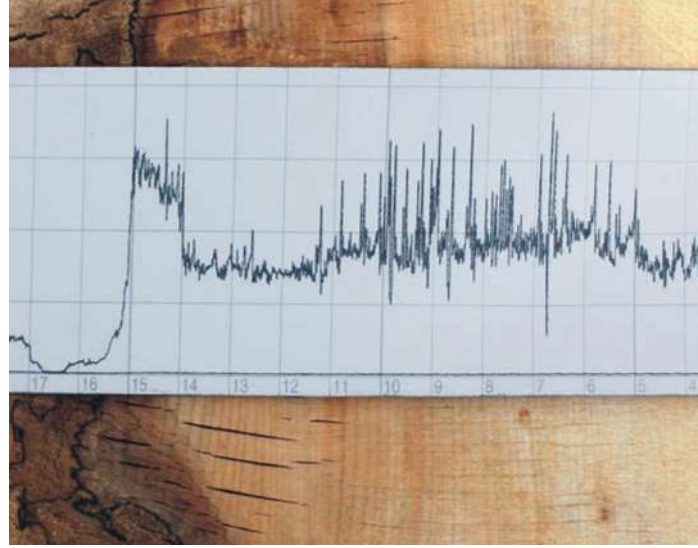
TEL: (+852) 2661 2392

FAX: (+852) 2661 2086

Email: sales@promat.hk

http://www.promat.hk





IML Software Center F-Tools / F-Tools Pro

Included in the IML Bluetooth Electronic Unit is the standard F-Tools Software package. The expanded F-Tools PRO is available as an extra option.

- **Standardsoftware F-Tools**
Standard functions: configuration, transmission, evaluation, magnification, printing and storing
- **Advanced Software F-Tools PRO**
includes the standard F-Tools features plus export, averaging, printing, cavity detector, tree ring analysis and simultaneous displaying of the measurement curve during drilling

Safety and Service

As the leading manufacturer of measuring and test equipment for trees and wooden structures, IML offers a unique combination of experience and expertise in the use/interpretation of these devices.

- Annual service inspection to check, clean and calibrate the measuring device
- Worldwide service via a network of experienced distributors
- TÜV certified quality
- Measurement technique recognised for more than 20 years

Intensive Courses & Training

Become familiar with the features, measurement methods and technical applications of the device, know the proper use of the equipment and the correct interpretation of the values measured.

- Device instruction on-site
- Intensive courses for professional use of the equipment
- Interpretation and evaluation of measurement curves
- Individual seminars, workshops and in-house training



PROMAT (HK) Limited 寶時(香港)有限公司
901 New Trend Center, 704 Prince Edward Road East, SPK, Kln, HK
香港九龍新蒲崗太子道東704號新時代商業中心901室
TEL: (+852) 2661 2392 FAX: (+852) 2661 2086
Email: sales@promat.hk http://www.promat.hk

