



## Features and Benefits:

- Proprietary 2.4 GHz Wireless
- Industry Leading Wireless Range
- Error Free Data Transmission
- Internal Antennae
- Advanced Options Available
- Peak Hold
- Tare
- No Cable Assemblies
- Unrivalled Resolution
- Audible Overload Alarm
- Unmatched Battery Life
- Reduced Maintenance Cost
- Compact Size
- Remote On-Off

Taking the heavy lift and structural weighing industry by storm is the new Straightpoint Wireless compression loadcell. By Adding the Straightpoint Wireless system to the already popular compression loadcell, we have developed a cost effective alternative to the standard compression loadcell.

No longer hindered by troublesome and hard to maintain cables, large scale projects can be completed in a fraction of the time previously required. Maintenance costs are all but eliminated due to the absence of cables and connectors, and the products added flexibility opens the door to world of new possibilities.

All our wireless compression loadcells benefit from our advanced microprocessor based electronics and unrivalled resolution and accuracy. Data transmission is handled by the Straightpoint Wireless system, providing high integrity, error free transmission of data via the latest in IEEE 802.15.4 (2.4 GHz) technology and is capable of a license free transmission range of up to 800'.



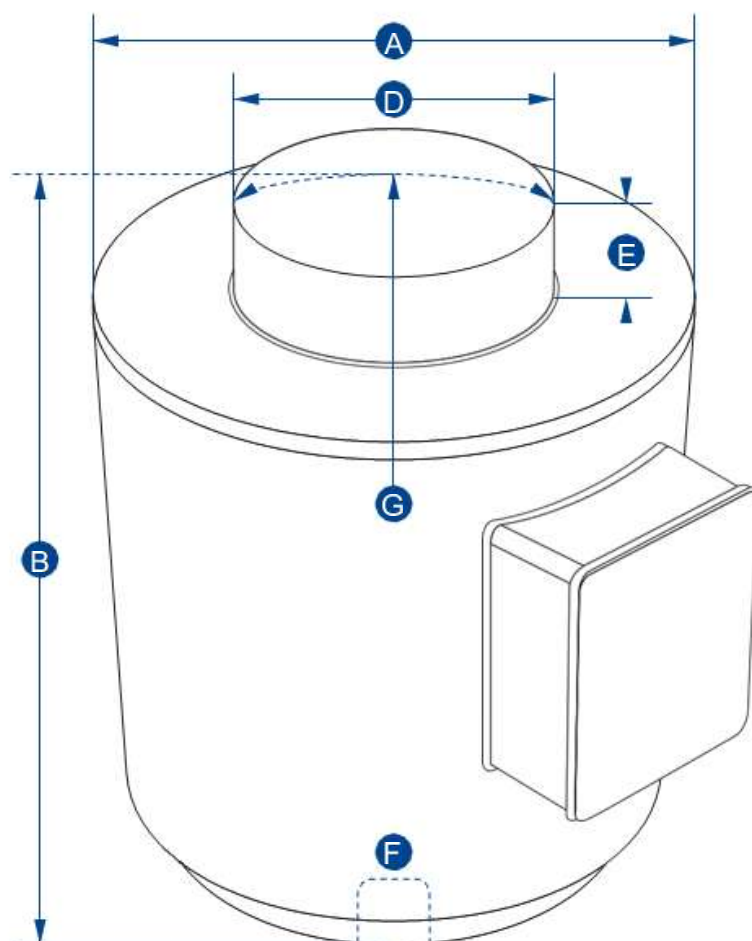
Straightpoint compression loadcells are used in a broad range of industries including mining, energy, defense, heavy rigging, structural weighing, shipping, and general transportation sectors, allowing for the calculation of total mass and the center of gravity on loads up to and exceeding 15,000 tons..

It is not until you add the powerful array of wireless accessories that the full potential of this product is realized. These accessories, which include a wireless repeater and several user friendly windows based software packages, provide a level of flexibility not previously known in the load monitoring industry.

Straightpoint's continued commitment to offering high quality, cost effective value added solutions for today's load monitoring and heavy lift challenges will surely secure them as an industry leader for years to come.

Straightpoint Wireless™  
compression loadcell





# Straightpoint Wireless™ compression loadcell

Part Number	NI5TCU	NI10TCU	NI25TCU	NI50TCU	NI100TCU	NI150TCU	NI300TCU	NI500TCU
Capacity	11000lb	22000lb	55000lb	110000lb	220000lb	330000lb	660000lb	1100000lb
Resolution	2lb	10lb	20lb	50lb	200lb	200lb	500lb	1000lb
Weight	7lb	7lb	7lb	13.64lb	34lb	34lb	143lb	143lb
Safety Factor	3:1							
Protection	NEMA 4							
Operating Temp	-40°F - 149°F							
Accuracy	± 0.3%							
Dimension A	2.99	2.99	2.99	4.02	5.98	5.98	7.28	7.28
Dimension B	3.27	3.27	3.27	5.00	7.24	7.24	11.81	11.81
Dimension D	1.26	1.26	1.26	2.32	3.15	3.15	6.10	6.10
Dimension E	0.39	0.39	0.39	0.51	1.02	1.02	1.08	1.08
Dimension F	M12 x 1.75	M12 x 1.75	M12 x 1.75	M20 x 2.5	M20 x 2.5	M20 x 2.5	M20 x 2.5	M20 x 2.5
Dimension G	5.98	5.98	5.98	5.98	17.01	17.01	17.01	17.01

(Larger capacities than those listed, price on application)



**PROMAT (HK) Limited 寶時(香港)有限公司**  
 901 New Trend Center, 704 Prince Edward Road East, SPK, Kln, HK  
 香港九龍新蒲崗太子道東704號新時代商業中心901室  
 TEL: (+852) 2661 2392 FAX: (+852) 2661 2086  
 Email: sales@promat.hk http://www.promat.hk

